



Tomorrow Is Yours

Your premium urban companion.

*Actual model, features and specifications may vary in detail from images shown. Subject to change without prior notice.

smart #1

A look and feel to suit you.

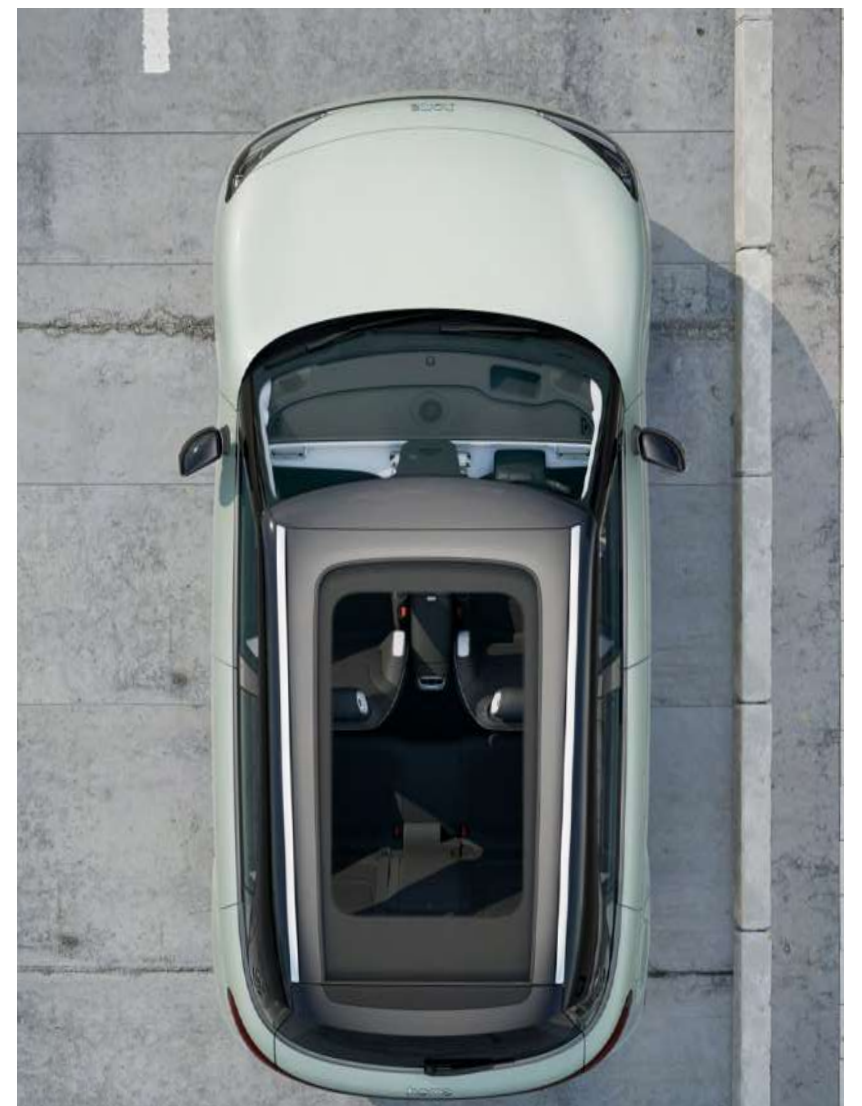
Discover the features making their mark in the Premium smart #1 including the CyberSparksLED + Matrix LED Headlamps Illuminated Front Grille, Luminous Side Logo, Panoramic Halo Roof, Concealed Door Handle, Frameless Door, Dynamic LED Taillight.



CyberSparksLED + Matrix LED Headlamps & Illuminated Front Grille



Luminous Side Logo



Panoramic Halo Roof



Concealed Door Handle



Frameless Door



Dynamic LED Taillight

*Actual model, features and specifications may vary in detail from images shown. Subject to change without prior notice.

smart #1
Interior Design at its finest.



*Actual model, features and specifications may vary in detail from images shown. Subject to change without prior notice.

Interior Design at its finest.

From its minimalist T-shape floating IP with customizable ambient light to the head-up display and sound system powered by Beats®, buckle up and explore the interior features of the premium smart #1.



Minimalist T-shape Floating IP & 64-Colour Ambient Light



Beats High-end 13 Speakers



Qi Wireless Charging



12.8" Floating LCD Touchscreen



9.2" HD LCD Instrument Cluster



10" Full Colour HUD

*Actual model, features and specifications may vary in detail from images shown. Subject to change without prior notice.

Elevating Comfort & Convenience

Courtesy Seat – Moves backward automatically for seamless ingress & egress.

Front Passenger Seat adjustment from the IHU to allow room for rear passengers.

Center Glove Box with chiller.



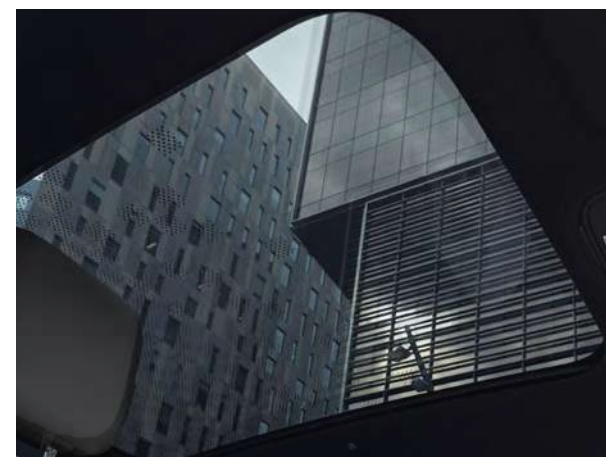
Front Seats Ventilation

with 3 fan speed adjustments and the ability to disable the function.



Rear Seat Armrest

with 2 cupholders and through-loading capability.



Electric Sun Blind

used for thermal insulation and provides sun protection when necessary.



10-way Electric

adjustment front seats. (Memory for Driver seat)

*Actual model, features and specifications may vary in detail from images shown. Subject to change without prior notice.

Space Wonders: Discover Versatility and Abundant Storage

Rear seat can be flat-folded to provide **986L** storage space.



Rear bench seat can be moved by **130mm** to allow more legroom to the rear or a larger trunk.



15-litre compartment under the hood of the vehicle.

It opens manually and is sealed with foam.

Immerse Yourself in Beats

Founded by Dr. Dre, this premium sound entertainment is introduced for the new generation.



2 Sound Modes

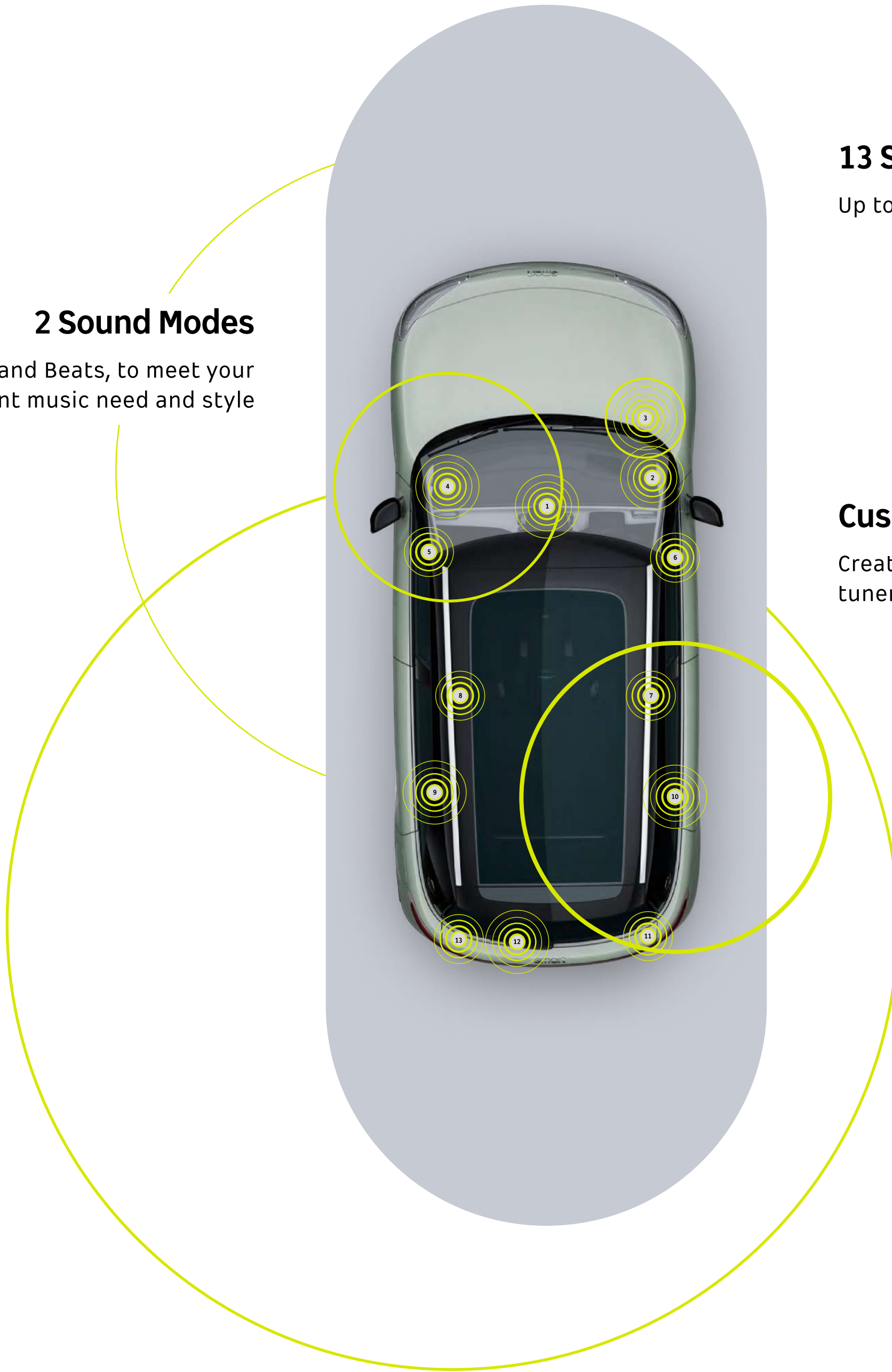
Classic and Beats, to meet your different music need and style

13 Speakers

Up to 640W Power Output

Custom Beats Sound

Created with Beats professional tuners



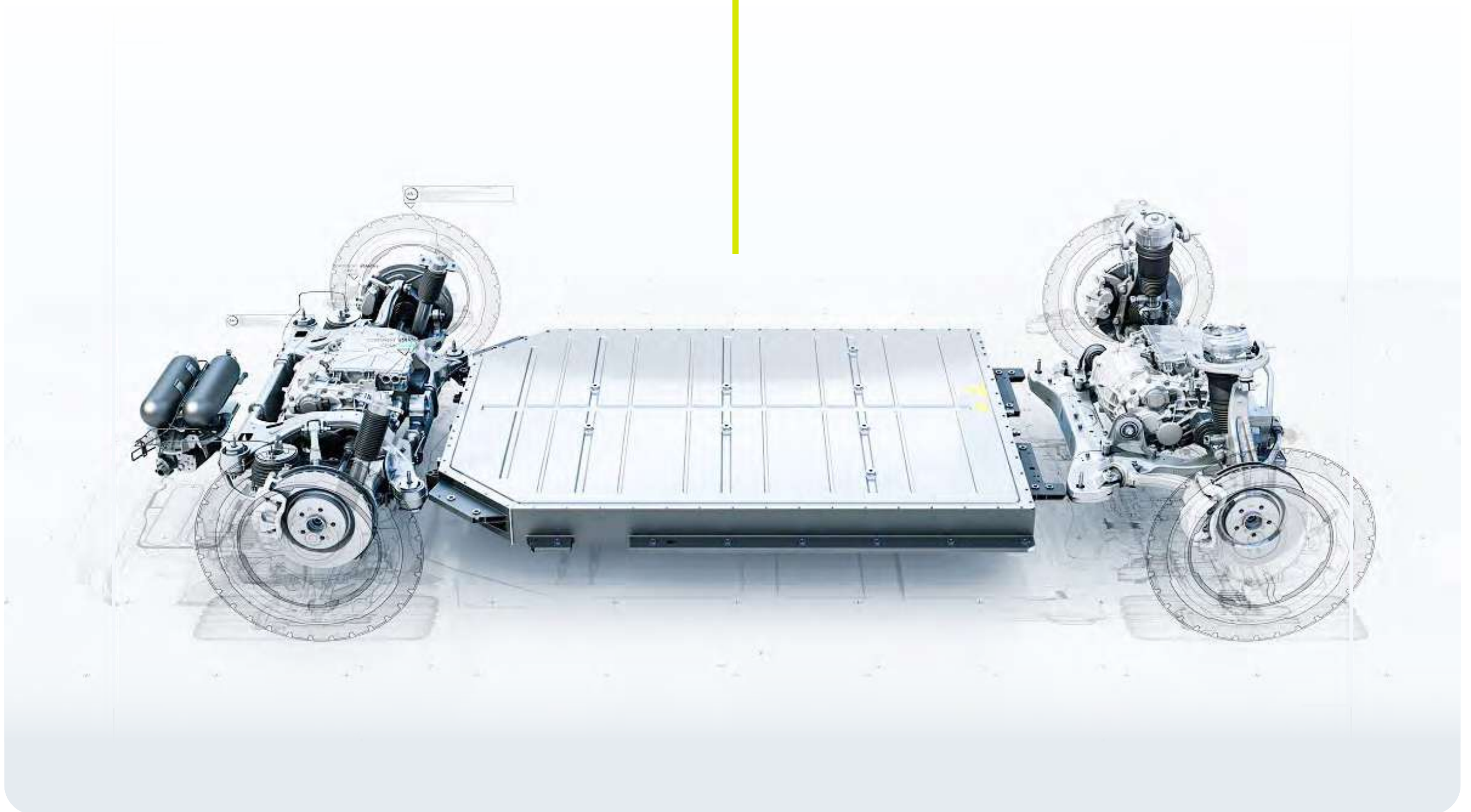
*Actual model, features and specifications may vary in detail from images shown. Subject to change without prior notice.



smart #1
Electric at its best.

*Actual model, features and specifications may vary in detail from images shown. Subject to change without prior notice.

Sustainable Experience Architecture (SEA) platform



Benefited from the advanced SEA
platform technologies.

Spacious interior

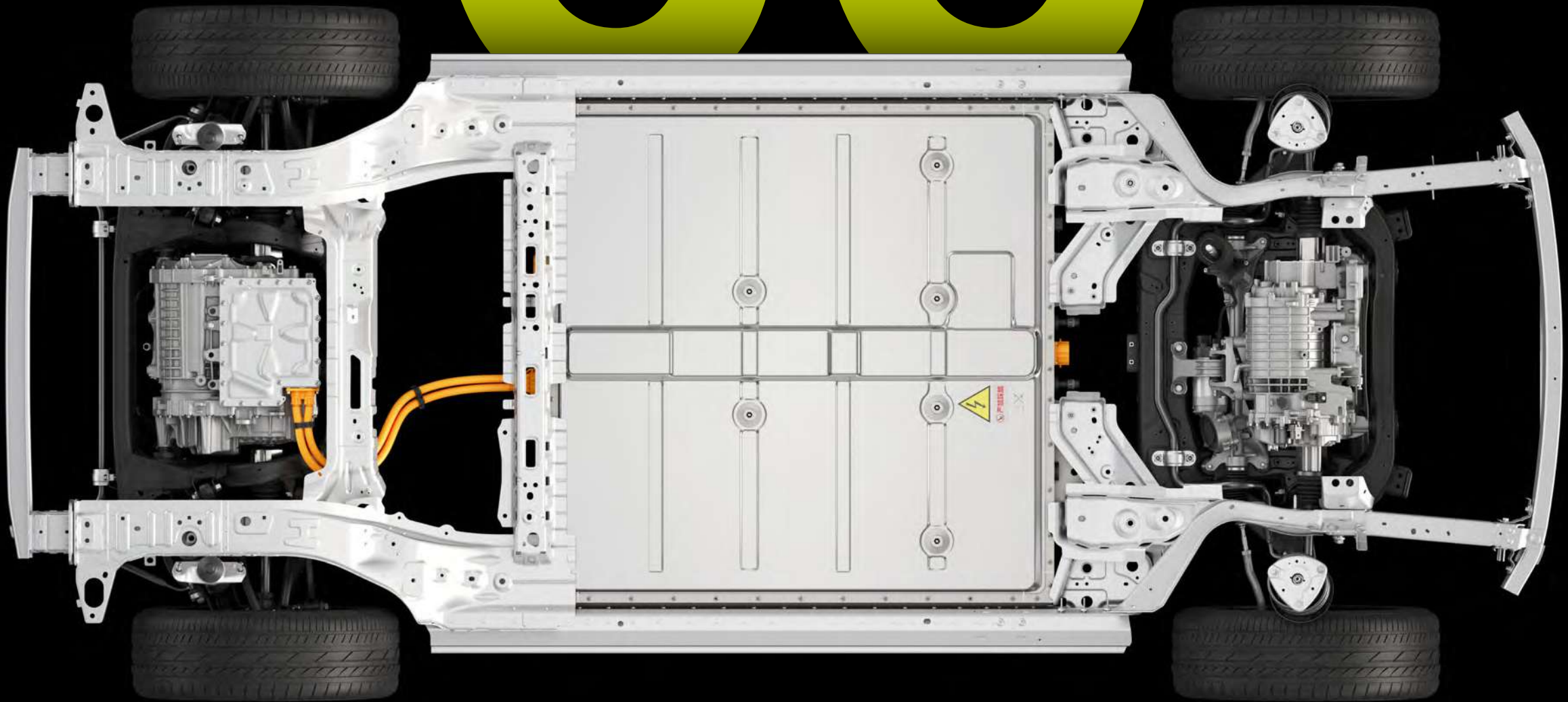
Advanced EV Technology
High performance,
extensive driving range &
fast charging

Comprehensive safety package

Ternary Lithium Battery

66

kWh
440 (WLTP/km) Range



NMC Battery is lightweight, high charging efficiency and higher energy.

*Actual model, features and specifications may vary in detail from images shown. Subject to change without prior notice.

Thrilling Dynamics of smart #1's Precision and Control

200kW / 343Nm

Silicon Carbide (SiC) Rear Permanent Synchronous Electric Drive

Propels the car from 0~100 km/h in 6.7s



Driving Mode.
Eco/Comfort/Sport



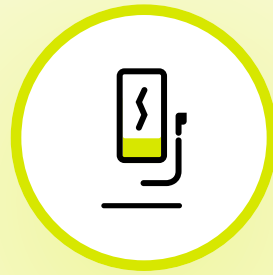
Different **Steering Assist**
Levels can be set separately



Levels of Energy Regeneration
with **E-pedal/Single Pedal Mode**

Rapid Charging Redefined for Ultimate Convenience

Enhance your daily routine with the exceptional charging capabilities of smart #1.



AC & DC Charging

22^{kw}

AC Charging

Charging in under **3 hours**.

100^{kw}

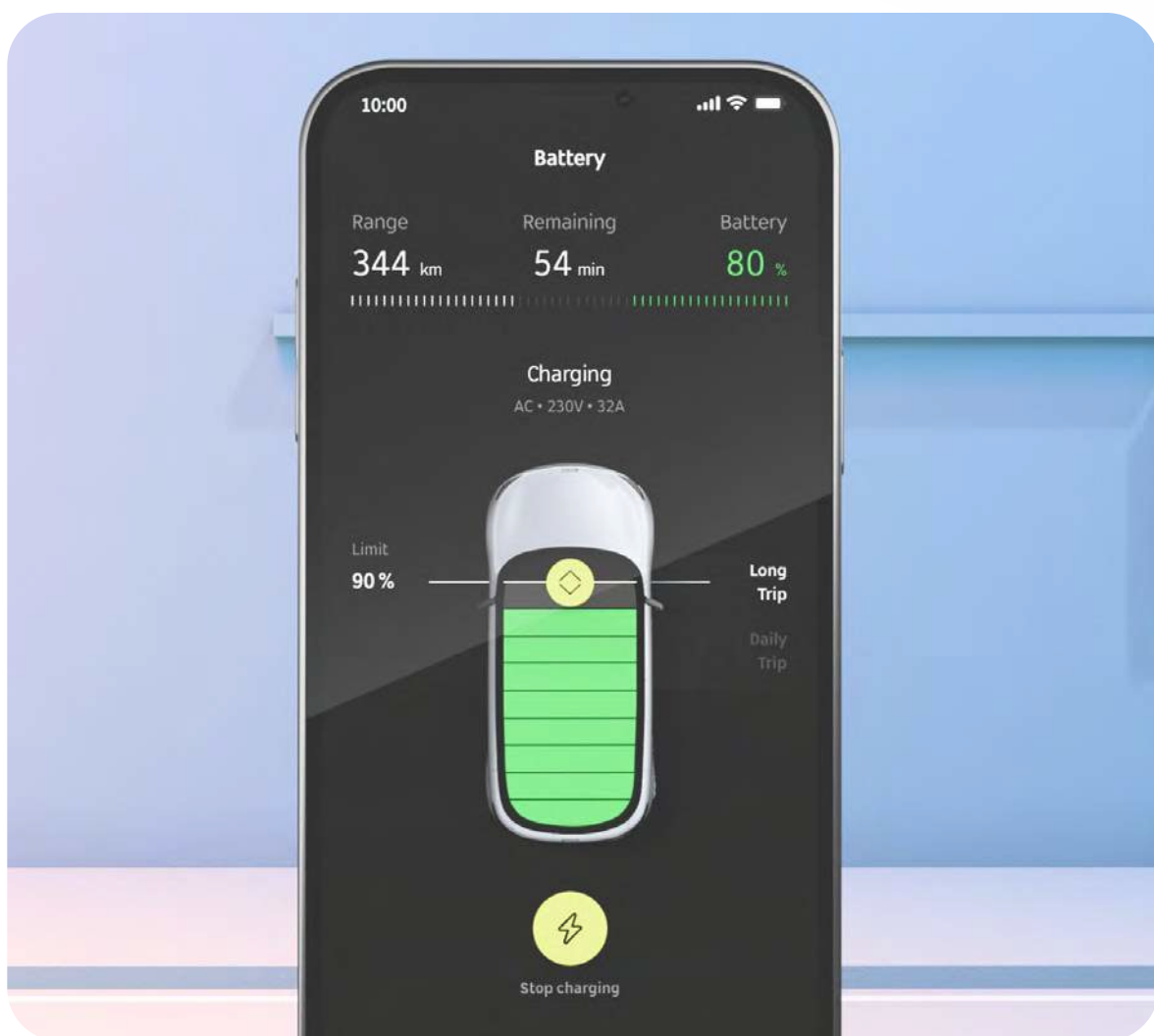
DC Fast Charging

Charging in under **40 minutes**
for SOC 10%~80%.

150^{kw}

DC Super Charging

Charging in under **30 minutes**
for SOC 10%~80%.



3.3kw V2L Reverse Power Supply

Enabling you to effortlessly power appliances like stoves and phones on the move.

*Actual model, features and specifications may vary in detail from images shown. Subject to change without prior notice.

Interior themes



After Dark



Touch Duo

Body colours (Roof Colours)

Pro



Digital White Metallic
(Eclipse Black)



Meta Black Metallic
(Eclipse Black)



Cyber Silver Metallic
(Eclipse Black)

Premium



Digital White Metallic
(Eclipse Black)



Meta Black Metallic
(Eclipse Black)



Cyber Silver Metallic
(Eclipse Black)



Laser Red Metallic
(Eclipse Black)



Quantum Blue Metallic
(Eclipse Black)



Lumen Yellow Metallic
(Eclipse Black)



Future Green Metallic
(Eclipse Black)

Rim styles



19" Amps Alloys
235/45 R19



19" Rotor Alloys
235/45 R19

smart #1

Specifications.

Technical

Technical Specification

Powertrain
 Transmission
 Driveline
 Battery capacity
 Peak Power
 Peak Torque
 Max.speed
 0-100km/h acceleration time
 WLTP range
 AC charging time (7.4kW, 10-80%)
 AC charging time (22kW, 10-80%)
 DC super charging time (10~80%)
 Consumption WLTP Combined
 Charging
 Emission CO²
 Battery type
 Length/Width /Height
 Wheelbase
 Number of seats
 Boot capacity
 Kerb weight
 Safety Standard

Suspension

Front Suspension
 Rear Suspension
 Comfort Suspension

Brake

	Pro+		Premium
	BEV		
	Single-speed automatic		
	RWD		
	66kWh		
	200kW		
	343Nm		
	180km/h		
	6.7s		
	420km		440km
	<7.5h		-
	-		<3h
	<0.5h		
	17.4kWh/100km		16.8kWh/100km
	CCS Type 2 Charging		
	0		
	Lithium (NMC)		
	4270mm / 1822mm / 1636mm		
	2750mm		
	5		
	203L		
	1788kg		1800kg
	5*E-NCAP		
	Machperson Strut		
	Multilink		
	Comfort Suspension		
	Front Ventilated Disc Brakes / Rear Solid Disc Brakes		
	Electric parking brake		
	Autohold		
	Autonomous Eemergency Brake (Pedestrian)		

*Actual model, features and specifications may vary in detail from images shown. Subject to change without prior notice.

smart #1

Specifications.

Driving & Exterior

Driving Control

Pro+

Premium

Drive Modes – ECO/Comfort/Sport

ABS – Electronic Brake Distribution (EBD)

Hill Assist & Hill Descent Control

Trailer Stability Assist

Anti-Roll System

Electronic Traction Control

Tyre Pressure Monitoring System (TPMS)

Exterior & Lights

Frameless Doors

Concealed Door Handles (electric)

-

|

Illuminated Concealed Door Handles

Panoramic Halo Roof

Sunroof sun shield (powered)

CyberSparks LED headlights

-

|

Matrix LED headlights

-

|

Courtesy Lights with Logo Projection

Auto-dimming Door Mirrors

Electrically adjustable, heated door mirrors
with memory and reverse auto-dipping

Front side window tinted

Rear side window and windshield with Privacy Glass

Rain Sensing Wipers

Powered tailgate

|

-

-

|

Powered tailgate with kick-sensor

smart #1

Specifications.

Interior & Comfort

Interior and comfort

	Pro+	Premium
	-	Steering wheel with illuminated logo
		Electrical Power Assist Steering
		Heated Steering Wheel
	Leatherette Steering Wheel Material	Leather Steering Wheel Material
	-	Ambient light (brightness and color adjustable-extended)
		Instrument Panel Material: imitation leather wrapping
	-	Auto-dimming Interior Mirror
		Keyless start (2 keyfobs)
		Cargo floor cover removable
Seats	Leatherette Seat Material	Leather Seat Material
		10-way Powered seat adjustment with lumbar support for front seats
		Heated front Seats
		40:60 split rear seat
		Rear centre armrest with 2 cup holders
HVAC		Automatic Dual zone climate control
		Air Filter
		Center Console with Air Vent Cooling

*Actual model, features and specifications may vary in detail from images shown. Subject to change without prior notice.

smart #1

Colour & Wheels

Body Colour (Roof Colour)

-  Digital White Metallic (Eclipse Black)
-  Meta Black Metallic (Eclipse Black)
-  Cyber Silver Metallic (Eclipse Black)
-  Laser Red Metallic (Eclipse Black)
-  Quantum Blue Metallic (Eclipse Black)
-  Lumen Yellow Metallic (Eclipse Black)
-  Future Green Metallic (Eclipse Black)

	Pro+	Premium
Digital White Metallic (Eclipse Black)	✓	✓
Meta Black Metallic (Eclipse Black)	✓	✓
Cyber Silver Metallic (Eclipse Black)	✓	✓
Laser Red Metallic (Eclipse Black)	-	✓ \$990.00
Quantum Blue Metallic (Eclipse Black)	-	✓ \$990.00
Lumen Yellow Metallic (Eclipse Black)	-	✓ \$990.00
Future Green Metallic (Eclipse Black)	-	✓ \$1,490.00

Wheels

19" Alloy 235/45 R19
Tyre repair kit

	Pro+	Premium
	Amps (R19)	Rotor (R19)
	✓	✓
	✓	✓
	-	✓

Interior Colours

After Dark
Touch Duo

*Actual model, features and specifications may vary in detail from images shown. Subject to change without prior notice.

smart #1

Safety & ADAS

Safety & ADAS

Pro+	Premium
Front & Rear Collision Mitigation	
Evasive Manoeuvre Assist	
Front & Rear Cross Traffic Alert	
Parking Assistant (8 sensors)	-
-	Fully Autonomus Parking (12 sensors)
-	Parking Emergency Brake
360° Camera	
Door Open Warning	
Adaptive Cruise Control with Stop & Go	
Highway Assist	
Lane Change Assist	
Traffic Jam Assist & Sign Recognition	
Lane Keep Assist	
Lane Departure Warning	
Blind Spot Detection	
Intelligent Speed Assist	
-	Adaptive High Beam Assist
Driver Performance monitor	
Front, front side, side curtain and far-side Airbags	
Front seatbelt height adjustment	
Rear seats ISOFIX	
Anti Theft Immobiliser	

*Actual model, features and specifications may vary in detail from images shown. Subject to change without prior notice.

smart #1

Infotainment & Connectivity

Infotainment & Connectivity

Pro+	Premium
Smartphone Wireless connection (Apple Carplay and Android Auto)	
Connected Service system	
-	10 inch Head-Up Display
9.2 inch HD Instrument Cluster	
12.8 inch Central Display Screen	
Digital radio	
Beats® Soundsystem	
5 Speakers	13 Speakers
Wireless Phone Charging	
Voice Command	
4 USB ports	
Front 12V port	
Trunk 12V port	

Warranty & Service

Vehicle Warranty
 High Voltage Battery Warranty
 High Voltage Battery Components Warranty
 Roadside Assist
 Service Intervals

Pro+	Premium
5 Years or 150,000 km (whichever come first)	
8 Years or 160,000 km (whichever come first)	
8 Years or 160,000 km (whichever come first)	
YES	
1 Year or 20,000 km (whichever come first)	

Tomorrow? It's electric.

Learn more about smart #1

Contact your authorised smart dealer
 Visit nz.smart.com

*Actual model, features and specifications may vary in detail from images shown. Subject to change without prior notice.